

Anti-MSLN hlgG1 Reference Antibody (Anetbio)

Product Information

Product Name	Anti-MSLN hlgG1 Reference Antibody (Anetbio)
Storage temp.	Store at 2-8°C short term (1-2 weeks).Store at $\leq -20^{\circ}\text{C}$ long term. Avoid repeated freeze-thaw.
Catalog# / Size	GM-87711MAB-1mg / 1 mg GM-87711MAB-5mg / 5 mg GM-87711MAB-25mg / 25 mg GM-87711MAB-50mg / 50 mg GM-87711MAB-100mg / 100 mg

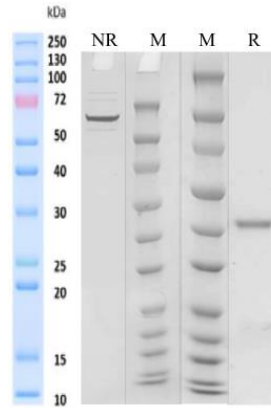
Antibody Information

Expression System	CHO
Aggregation	< 5% as determined by SEC-HPLC
Purity	> 95% as determined by SDS-PAGE
Endotoxin	< 1 EU/mg, determined by LAL gel clotting assay
Sterility	0.2 μm Filtered
Target	MSLN
Clone	Anetumab
Alternative Names	MPF, SMRP
Source/Isotype	Human IgG1(K214R), Lambda
Application	/
Description	MSLN is over expressed in several human tumors, including mesothelioma, ovarian cancer, pancreatic adenocarcinoma, lung adenocarcinoma, and cholangiocarcinoma. MSLN is a tumor differentiation antigen that is normally present on the mesothelial cells lining the pleura, peritoneum and pericardium. Since mesothelin is overexpressed in several cancers and is immunogenic, the protein could be exploited as tumor marker or as the antigenic target of a therapeutic cancer vaccine.
Formulation	phosphate-buffered solution, pH 7.4.

Version:3.1

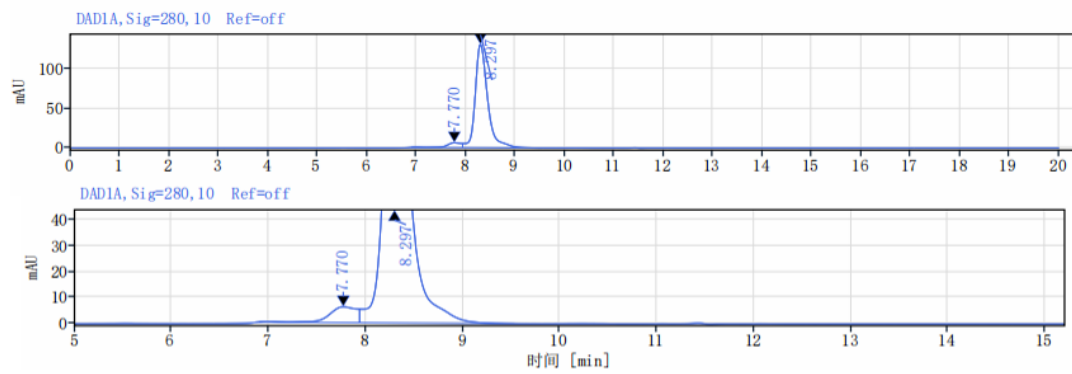
Data Examples

SDS-PAGE



On SDS-PAGE under reducing (R)/non-reducing(N-R) condition. The gel was stained overnight with Coomassie Blue. The purity of the protein is greater than 95%.

SEC-HPLC



The purity of this product is more than 95% verified by SEC-HPLC